

AIR-WB



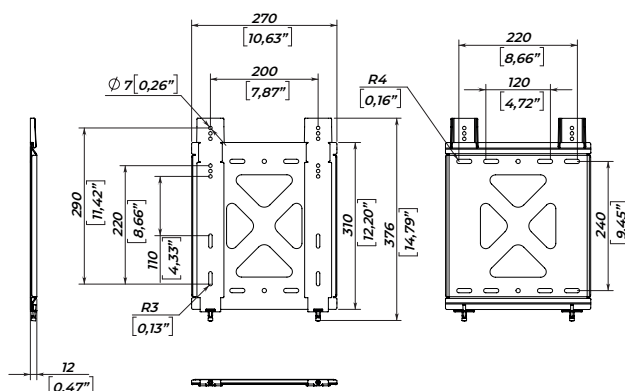
Wall mounting bracket

The AIR-WB ultra-thin bracket was developed by the best engineers of the MAG Audio. The compact design of this wall bracket allows to put the subwoofer as close to the wall as possible, at a distance of only 12 mm. At the same time, it has not lost its strength and reliability due to the design of the structure.

The AIR-WB features a two-part design for fast and convenient installation. It has an individual construction with hooks on the slats for easy hanging on the wall plate. The mounting bolt on the bottom offers ultimate security for mounting is convenient for the consumer.

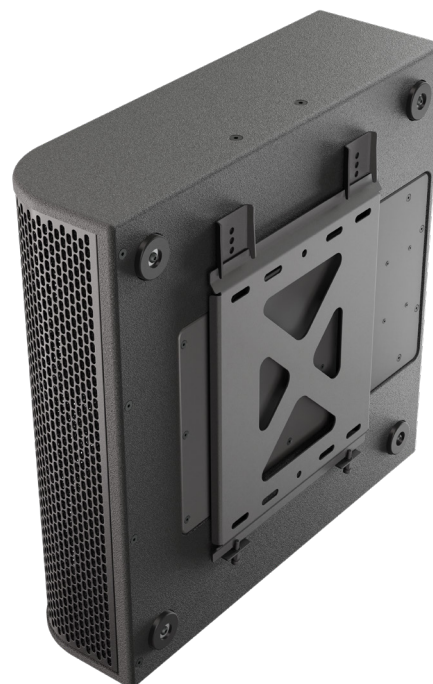


DIMENSIONS



SPECIFICATIONS

Functions	thin wall mounting bracket
Mounting patterns	50-200 x 110-290 mm / 1,97"-7,87" x 4,33"-11,42"
Wall mount patterns	220 x 240 mm / 8,66" x 9,45"
Dimensions (W x H x D)	270 x 376 x 12 mm / 10,63" x 14,79" x 0,47"
Weight (Net/Shipping)	1,74 kg / 3,84 lbs



SAFETY INSTRUCTIONS

1. Entrust mounting equipment to the experienced professionals following current safety instructions. Improperly installed equipment can result in property damage, personal injury and/or liability to the installing contractor.
2. Always use safety cables to prevent equipment from falling during setup or while exploitation.
3. Carefully check the mounting surface of the wall. Make sure wall material can hold the weight of the speaker with the mounting added.
4. Make sure to securely fix all the mounting bolts. Loose bolts may become unscrewed with time due to vibration and create safety hazard.