

# AIR-WS



## Wall mounting bracket

The AIR-WS is a wall mounting bracket for AIR-C4, AIR-C4T, AIR-C5, AIR-C5T and AIR-C24 with pan and tilt functionality.

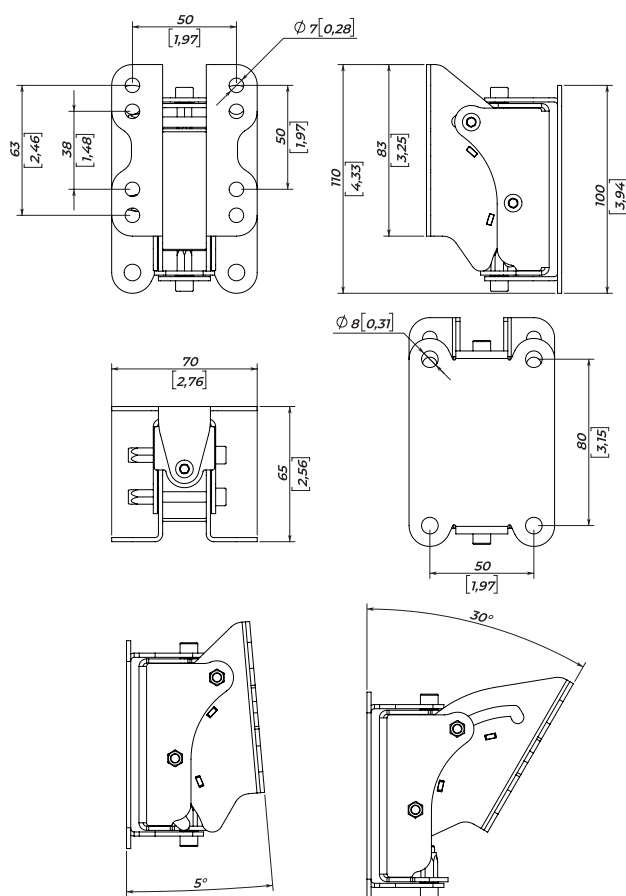
Tilt adjustments are simply achieved using a self-locking mechanism holding the speaker in place, even with all the bolts fully released.

The AIR-WS mount fits all loudspeakers that are foreseen from universal mounting patterns VESA 50 x 50, 50 x 63 mm, 50 x 38 mm (1,97" x 2,46", 1,97" x 1,48"). Its installation on the wall mount patterns is 50 x 80 mm (1,97" x 3,15").

The AIR-WS is the way to go in all immersive sound applications given its pan ability of -90° to 90° rotation and -5° to +30° vertical tilt.



### DIMENSIONS



### SPECIFICATIONS

Functions	wall mounting bracket with pan and tilt
Universal mounting patterns	50 x 63 mm / 1,97" x 2,46" 50 x 38 mm / 1,97" x 1,48" VESA 50 x 50
Wall mount patterns	50 x 80 mm / 1,97" x 3,15"
Pan angle	-90° to 90°
Tilt angle	-5° to +30°
Dimensions (W x H x D)	70 x 110 x 65 mm / 2,76" x 4,33" x 2,56"
Weight (Net/Shipping)	0,45 kg / 0,99 lbs

### SAFETY INSTRUCTIONS

1. Entrust mounting equipment to the experienced professionals following current safety instructions. Improperly installed equipment can result in property damage, personal injury and/or liability to the installing contractor.
2. Always use safety cables to prevent equipment from falling during setup or while exploitation.
3. Carefully check the mounting surface of the wall. Make sure wall material can hold the weight of the speaker with the mounting added.
4. Make sure to securely fix all the mounting bolts. Loose bolts may become unscrewed with time due to vibration and create safety hazard.