

# BEE-12

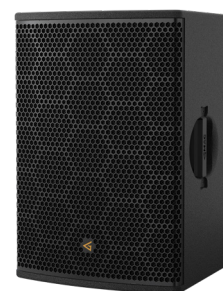
Passive speaker



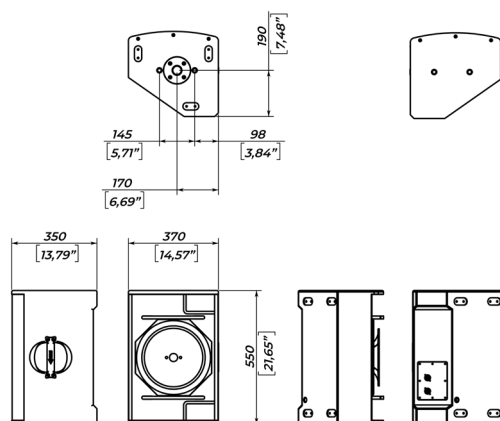
The BEE series introduces a fresh era of user-friendly and intuitive design paired with meticulous multitasking capabilities. Leveraging coaxial driver technology to its fullest, this series excels in portable PA, installed, or stage monitoring applications. With flawless phase alignment, the coaxial driver ensures a seamless and predictable off-axis response, empowering you to regain control over speaker coverage. Crafting a pristine and comfortable sound environment has never been simpler.

BEE series are carefully engineered for simple carrying, swift installation, and low-profile stage monitoring. By minimizing weight to the limit, the BEE series offers ultimate simplicity and convenience for mobile professionals who conduct their business on the move.

BEE-12 is a passive universal FOH and stage monitoring speaker fitted with a low-distortion 12" coaxial driver with 3" low-frequency voice coil and 2,8" voice coil. It is connected using the industry-standard Speakon connector, allowing for simple integration into any sound reinforcement setup.



## DIMENSIONS



## ACCESSORIES



**ABEE-12**  
Flying  
adapter



**VBEE-12**  
Vertical  
bracket

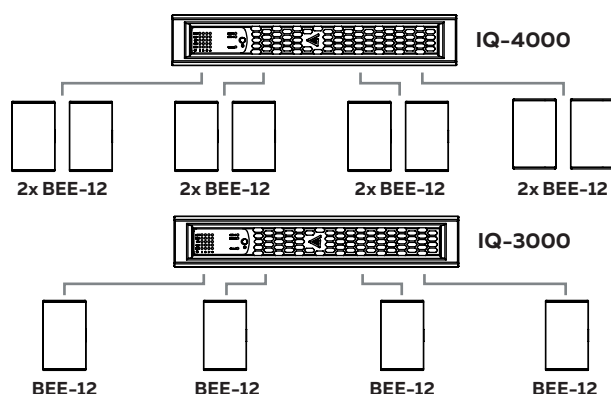


**BEE-Hook**



**HBEE-12**  
Horizontal  
bracket

## AMPLIFICATION



## SPECIFICATIONS

Frequency Response (-10dB)	60 - 18000 Hz
Max SPL <sup>1</sup>	135 dB
Sensitivity (1W / 1m)	96 dB
Driver	12", coaxial 3" VC
Nominal Coverage Angle	80 x 80 deg
Impedance	8 Ohm
Nominal power <sup>2</sup>	500 W
Connectors	2 x Neutrik Speakon
Dimensions (W x D x H)	370 x 350 x 550 mm / 14,57" x 13,79" x 21,65"
Weight	19,7 kg / 43,43 lbs
Mounting options	M10 safety point; 35 mm pole socket; 4 x M10 flying points
Enclosure material	Plywood, wear-resistant paint
Speaker protection	Steel grill, acoustically transparent backing

<sup>1</sup> - pink noise, filtered according to AES 2 - 2012, crest factor 12 dB

<sup>2</sup> - based on transducer power measured according to AES 2 - 2012

## CONNECTIONS

Always use high-pass filter to prevent speaker damage and distorted sound by eliminating low non-audible frequencies in input signal.

Do not exceed input power ratings mentioned in specifications while exploiting the speaker system.

Speaker system comes with two Neutrik® Speakon heavy duty sockets for easy connection.

Signal +	1 +
Signal -	1 -
High pass filter:	
Freq, no less than	60 Hz
Order, no less than	18 dB/oct
Recommended amplifier power	500 - 1000 W on nominal impedance

## SAFETY INSTRUCTIONS

1. Do not pour liquids on speaker system - this may cause driver cone destruction and unappealing speaker appearance. Do not allow direct sunlight on speaker cone in order to prevent premature failure. Do not install speaker system near open flames or heating elements.
2. Do not use speaker system with damaged speakON or speaker cable so as not to cause electric shock hazard or fire hazard.
3. Make sure speaker system is firmly set up on the floor, stage, or wall (where applicable).
4. While setting speaker system up onto an angled or slippery surface, make the necessary arrangements to avoid vibration-induced movement.
5. Speaker system is capable of delivering significant sound pressure levels. To avoid permanent or temporary hearing damage, prolonged exposure to sound pressure levels exceeding 90 dB should be limited.