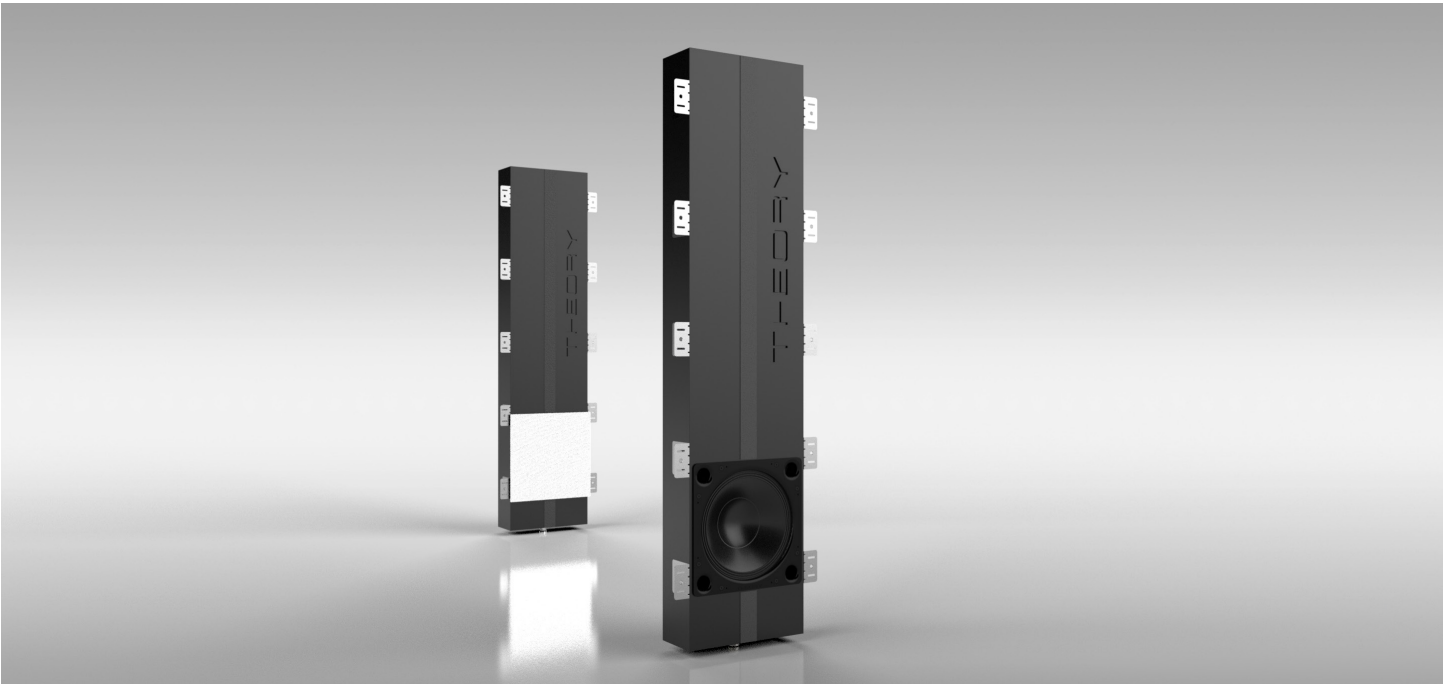


## iws12-6 12" Architectural Subwoofer



### KEY FEATURES:

- 12" High-Output Professional-Grade In-Wall Subwoofer
- 1400W, 4" Voice Coil Long-Throw driver
- 5.5" deep enclosure fits into 2"x 6" walls
- Maximum Output 124dB / 1m
- Highest Performance Available in its Class

### OVERVIEW:

The iws12-6 install subwoofer employs a high-power, 1400W, 4" voice-coil long-throw driver in a 5.5" deep enclosure that can be installed flush into 2" x 6" stud walls, or surface mounted with only 5.5" of total depth. The bass the iws12-6 provides belies intuition, extending deeper than seems possible, with tight, tuneful expression.

Hyper detailed with extremely nuanced texture, Theory subs deliver low notes with a level of authority you can feel in your gut. The iws12-6 offers the highest output available in its class. It's the perfect complement to Theory's full range speakers to create a truly astonishing high-energy environment.

The iws12-6 ships with low profile mount brackets for 16" O.C. studs. An optional low-profile white, paintable, perforated grille allows the sub to completely disappear within any environment. Pair it with multiple Theory ic6, iw25, or Pendant Speakers for an easy to deploy high-performance distributed audio or commercial audio system.

The performance and versatility of the iws12-6 must be experienced to be believed. Book a visit to the Theory Southern California Experience Center today to learn just how valuable this little loudspeaker will be in your system design toolbox.

**The iws12-6 enclosure and iws12 speaker assembly are sold separately.**

### APPLICATIONS:

#### Background and Foreground Business Music Systems

Bars and sports bars, restaurants, retail stores, hotels, houses of worship, corporate conference, screening rooms, lobbies, and casinos, etc.

#### Music and Video Post Production

Surround and Dolby Atmos mix rooms, music post production.

#### High Output Surround Sound Systems

Residential and commercial media rooms, gaming systems, executive boardrooms and conference rooms.

#### Two-channel Music Systems

Premium residential and corporate stereo music systems, music and performance higher education.

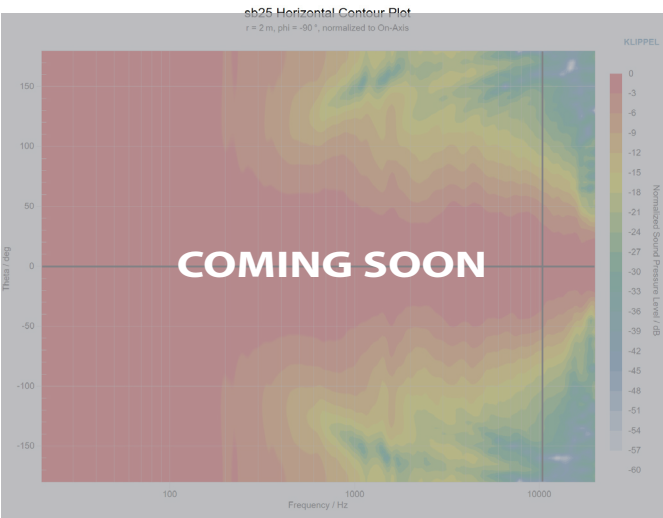
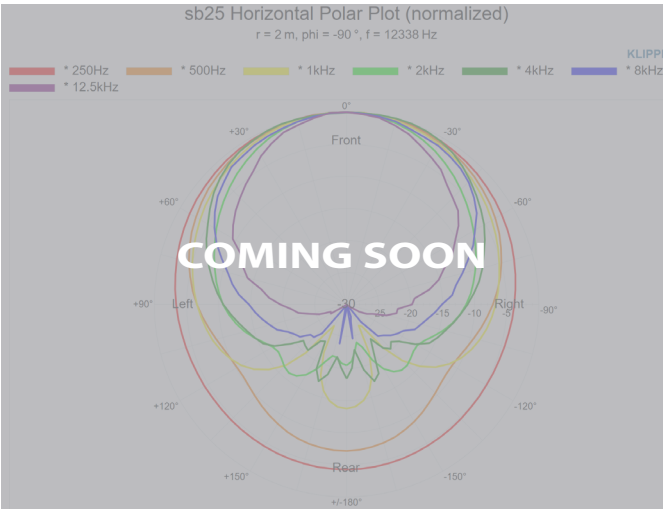
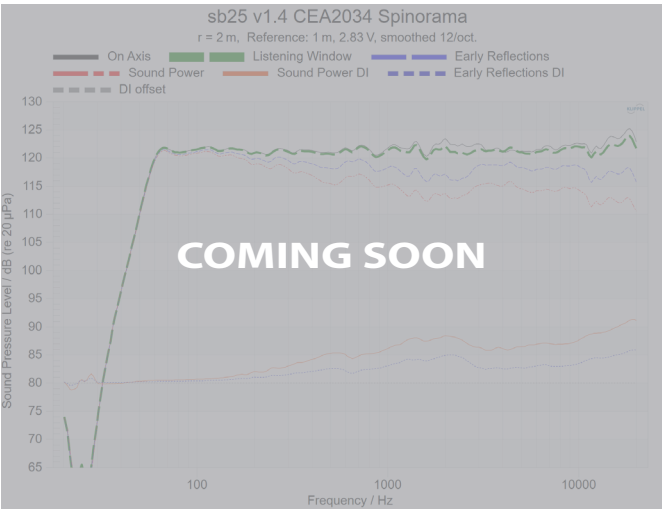
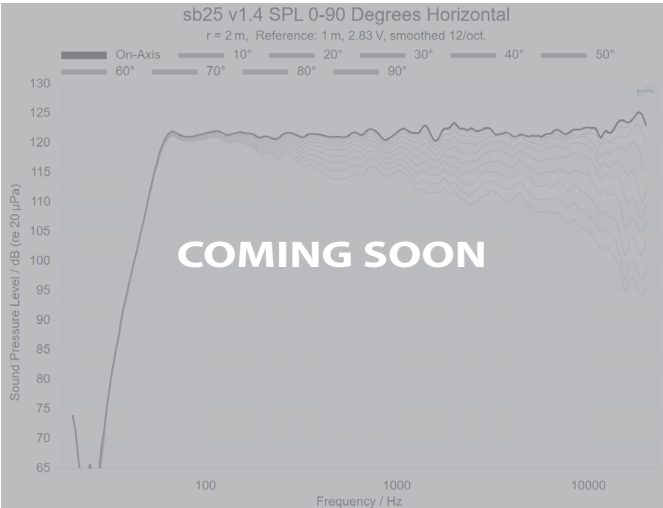
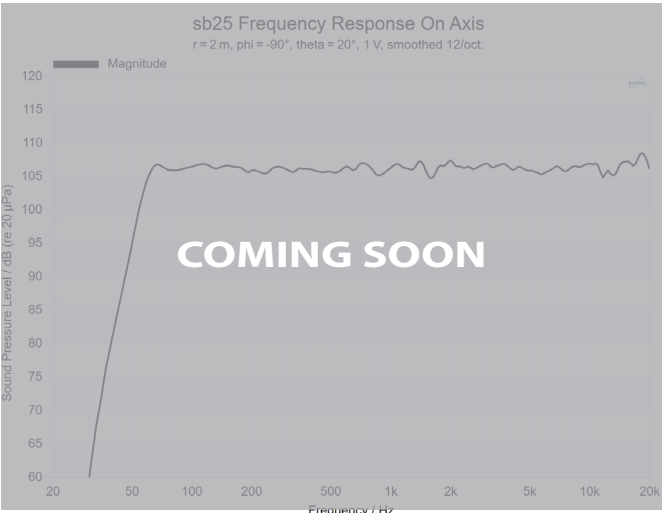
## iws12-6 Specifications<sup>1</sup>

---

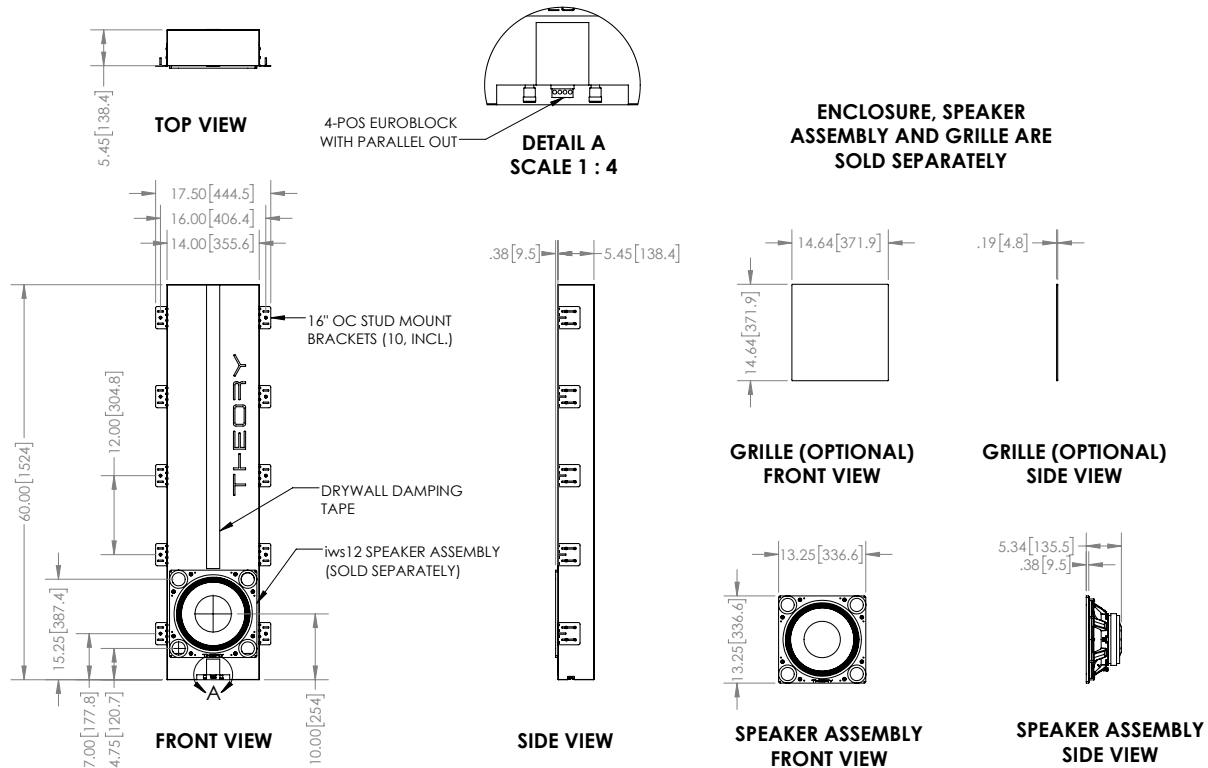
<b>Description:</b>	12" High-Output In-Wall Subwoofer for 2" x 6" walls
<b>Operation:</b>	Passive, Requires One (1) Theory Loudspeaker Controller Amp Channel
<b>DSP Requirements:</b>	<b>Requires Model-Specific Theory-Certified DSP Loudspeaker Processing</b>
<b>Drivers:</b>	1 x 12" Theory 1400W 4-Inch Voice Coil Long Throw Woofer
<b>Enclosure:</b>	Multi Plywood Enclosure
<b>Terminals:</b>	Twin Spring-Loaded Push Terminals
<b>Outdoor Capability:</b>	Indoor Use Only
<b>Bandwidth:</b>	24Hz - 125kHz, -3dB; 18Hz, -10dB
<b>Sensitivity:</b>	95.5dB SPL / 1m
<b>Power Handling:</b>	700W (AES); 1400W (Continuous); 2800W (Peak)
<b>Minimum Recommended Power:</b>	250W rms
<b>Maximum Output:</b>	124dB SPL / 1m
<b>Nominal Impedance:</b>	8-ohms
<b>Colors:</b>	Black, White Perforated Metal Grille Optional
<b>Dimensions:</b>	60" H x 14" W x 5.5" D (1524mm H x 356mm W x 140mm D)
<b>Net Weight:</b>	49 lbs. (22.2 kg)
<b>Included Accessories:</b>	Low Profile Angle Mount Brackets for 16" O.C. Studs
<b>Optional Accessories:</b>	White Perforated Low-Profile Grille

<sup>1</sup> - Specifications when used with required Theory-Certified DSP loudspeaker processing. Failure to use Theory-Certified processing may cause damage, degrades performance and voids manufacturer warranty.

# iws12-6 Measurements



## iws12-6 Dimensions



## iws12-6 Architectural Specifications

The loudspeaker shall be of the one-way "subwoofer" type comprising a single, multi plywood enclosure containing one (1) 12" (305mm) paper cone, treated fabric surround and a four-inch voice coil. It shall utilize an (optional) white paintable metal grille. Frequency range shall be 24Hz – 125KHz (-3dB). Total power handling shall be 700 Watts (AES); 1400W continuous program; 2800W Peak. Sensitivity measured with 2.83 volts input at 1 meter on axis shall be 95.5dB. The loudspeaker shall operate via a single connected amplifier channel of suitable power and *must be combined with external Manufacturer-Certified DSP Processing*. The unit shall have a nominal input impedance of 8-ohms. The loudspeaker enclosure shall be constructed from multi plywood material. The external wiring connectors shall be 4-position Euroblock connector and spring loaded and gold plated posts, and shall accept bare wire, single or dual banana-type connectors with 19 mm (3/4 in) spacing. External dimensions shall be 14" Width x 5.5" Depth x 60" Height (356mm W x 140mm D x 1524mm H). The total enclosure shall weigh 49 lbs. (22.2 kg) per unit. The loudspeaker shall be the Theory Audio Design iws12-6 Architectural Subwoofer.

© 2023 THEORY AUDIO DESIGN, LLC. All rights reserved.

Theory Audio Design, LLC dba Theory Professional routinely engages in programs to improve, modify and revise its products without notice or obligation.

### THEORY AUDIO DESIGN, LLC dba THEORY PROFESSIONAL

25741 Atlantic Ocean Drive, Suite B  
Lake Forest, CA 92630

Tel: 949-245-0505  
www.theoryaudiodesign.com